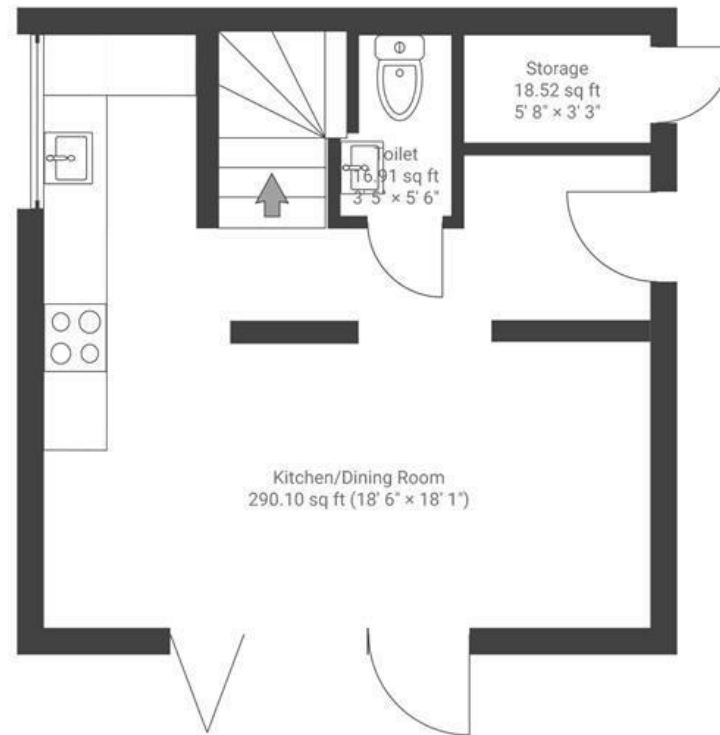


# Wellington Mews

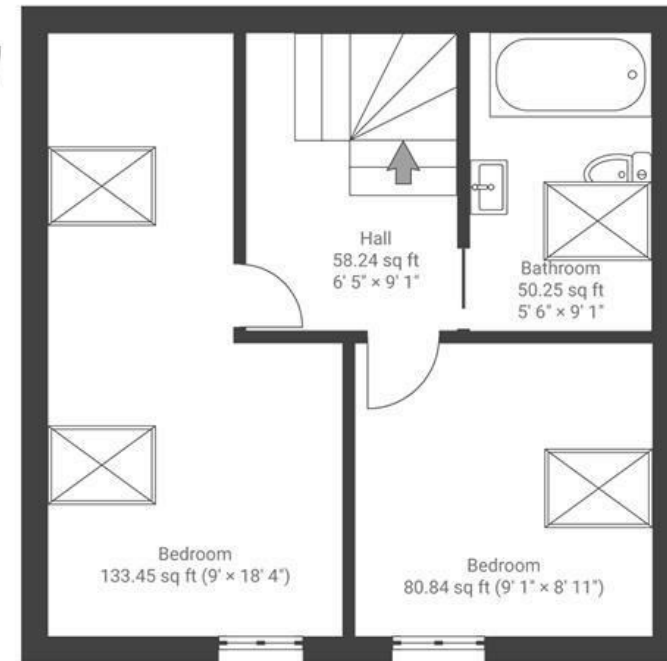
## HORFIELD

APPROXIMATE FLOOR AREA  
60.1 SQM / 647 SQFT

GROUND FLOOR



FIRST FLOOR



**Boardwalk**

# Wellington Mews

HORFIELD,

£

£395,000



BS7 8UG

zzz

2 Bedrooms



1 Bathrooms

*"Individual and unique looking property in a private mews, although only a stones throw from the vibe of Horfield and Bishopston. Very close to Southmead hospital, Airbus, GKN and Rolls Royce for work. The house is eco-friendly and economical to run and is close to amenities, restaurants, bars and shops. Great for cricket and Bristol Rovers fans!"*

